



**Lospalos Cultural Centre  
Childrens Garden  
Lospalos Timor Leste**





Hibiscus flowers



Traditional percussion or weaving between posts



Bird of Paradise flowers



Weaving inspired artworks completed by local artists



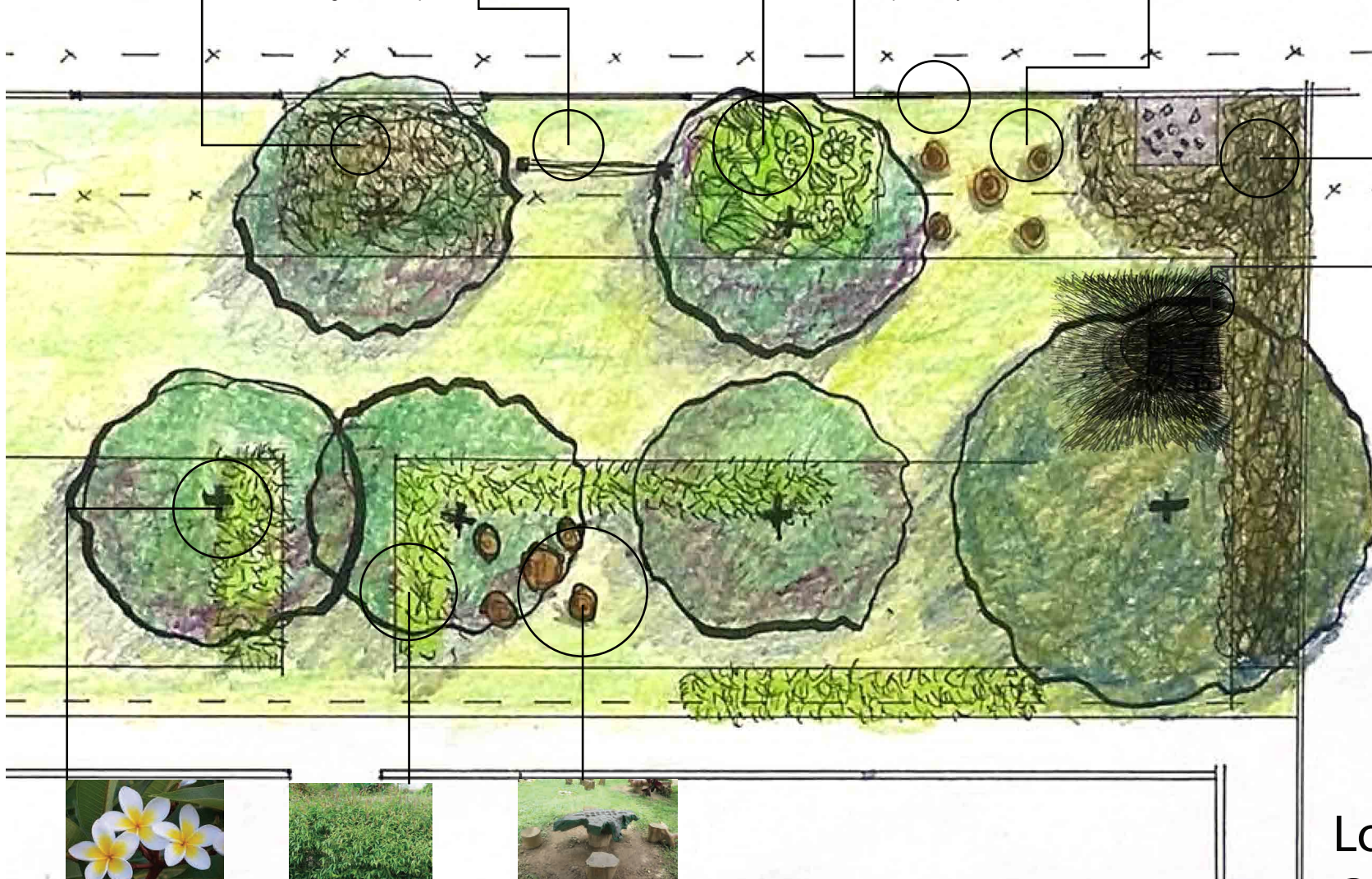
Stump jump play or art table



Hibiscus flowers



'Cubby' inspired by traditional Fataluku architecture and wooden carvings



A small garden design for the children in the cultural centre of Lospalos. The Design includes many games and activities such as "po pati pati" / "laorai" (abacus like game) "Kakal uta" / "baku ai" percussion instruments, in addition to a small traditional house. It also Features beautiful flowers and good shade for children.



Frangipani feature Trees



Defining play spaces with hedge plants

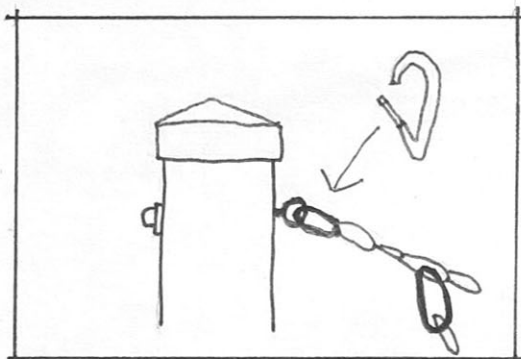


Traditional games facilitated through garden features

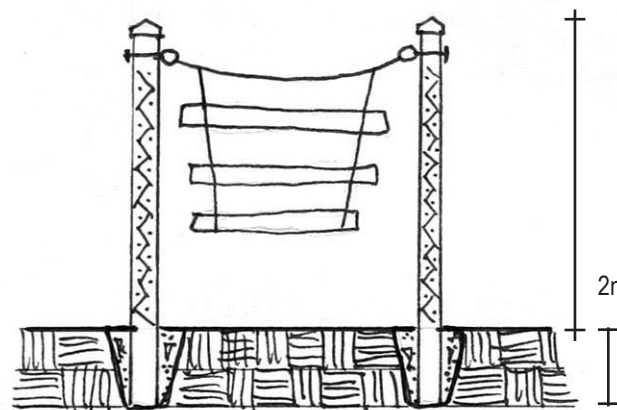
0 1 2 3 4 5m  
Scale 1:100 @ A4 pg2

# Lospalos Cultural Centre Childrens Garden





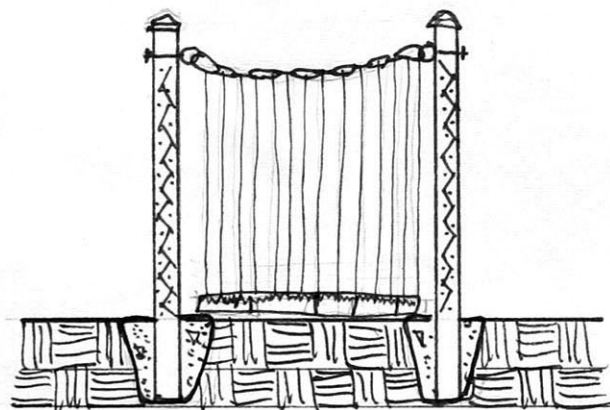
Activity prompts are detachable with Carabena Clips on to rope or chain. Clips attach to post through Eyebolt.



Kakulu- traditional log drums to accompany stage performances

2m High post

500mm deep footing

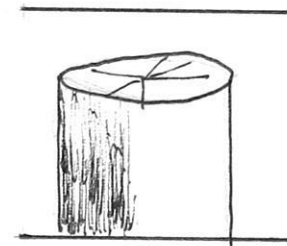


Weaving improvisation- Ropes attached to top chain allow weaving activities with a range of materials .

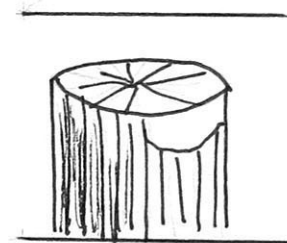
#### Detail F Post Variations

Posts to be decorated with stencils derived from traditional carvings, and designed/ painted by local artist

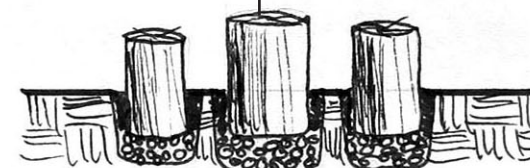
Timber selected for outside use needs to be durable. Chele Chele when available could be used inground, but should be set in concrete over loose gravel



Concrete stumps may be considered as an alternative. Ensure quality finish with minimal sculpting/ details and use brown/ red oxides in cement mix.



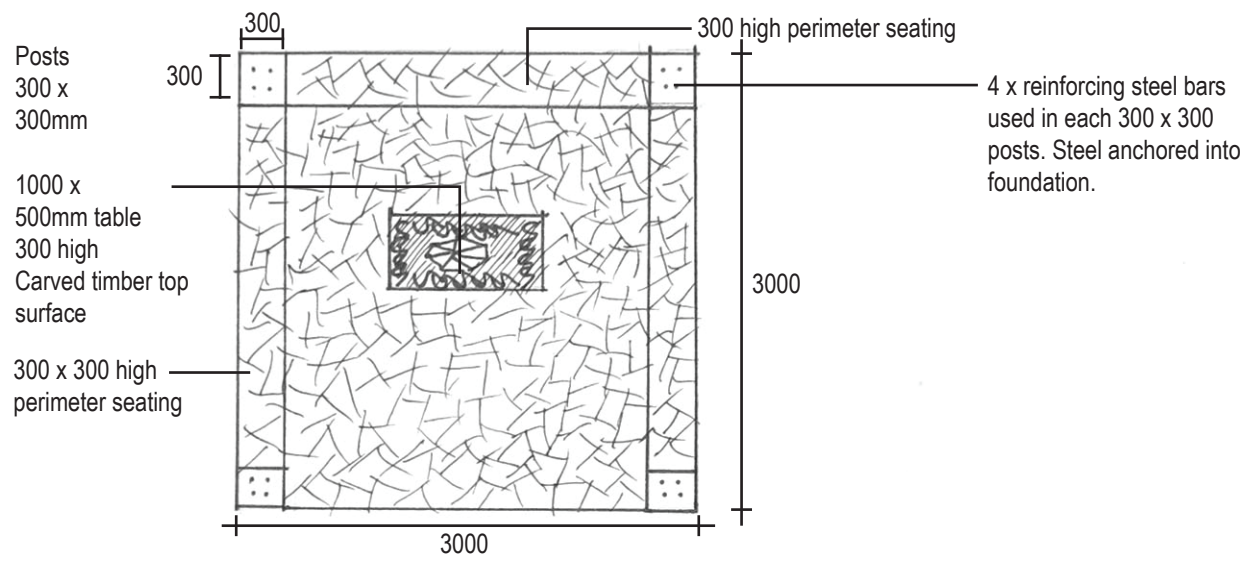
Traditional games carved into central stump



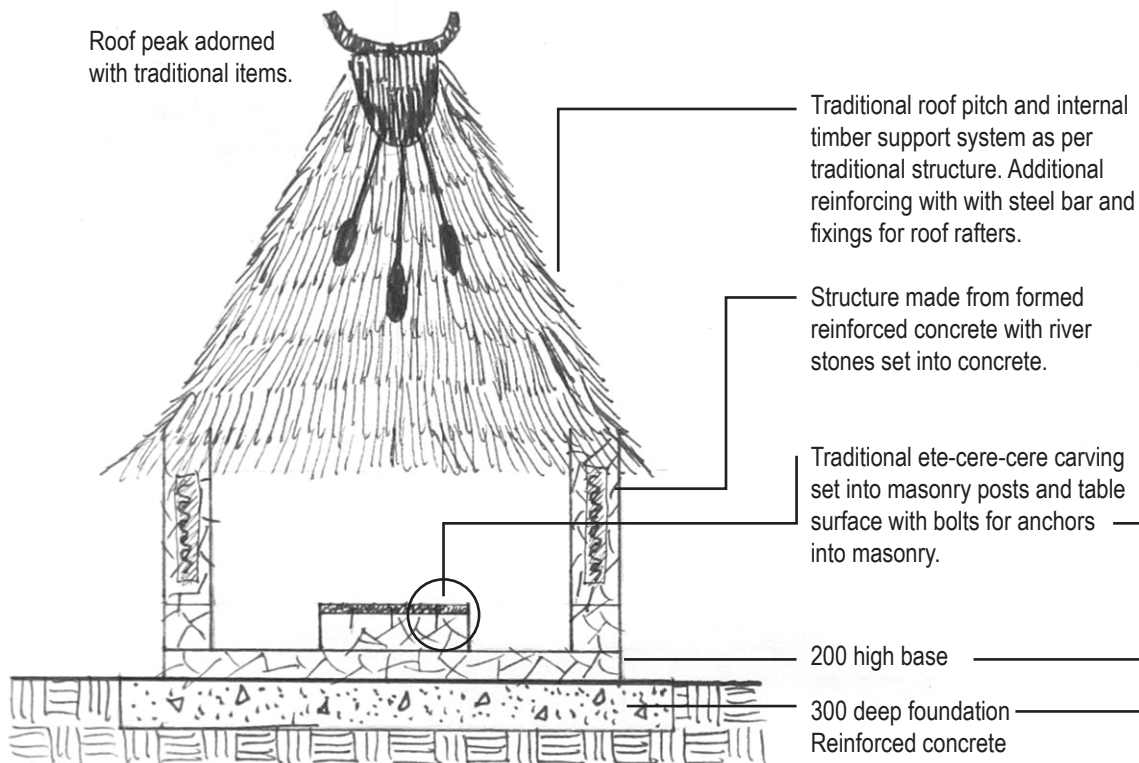
Timber stumps should sit over minimum 150 gravel prior to being set into concrete. Top of the seating stump should be 400-500mm

**Detail Seating Alternative/ options.**



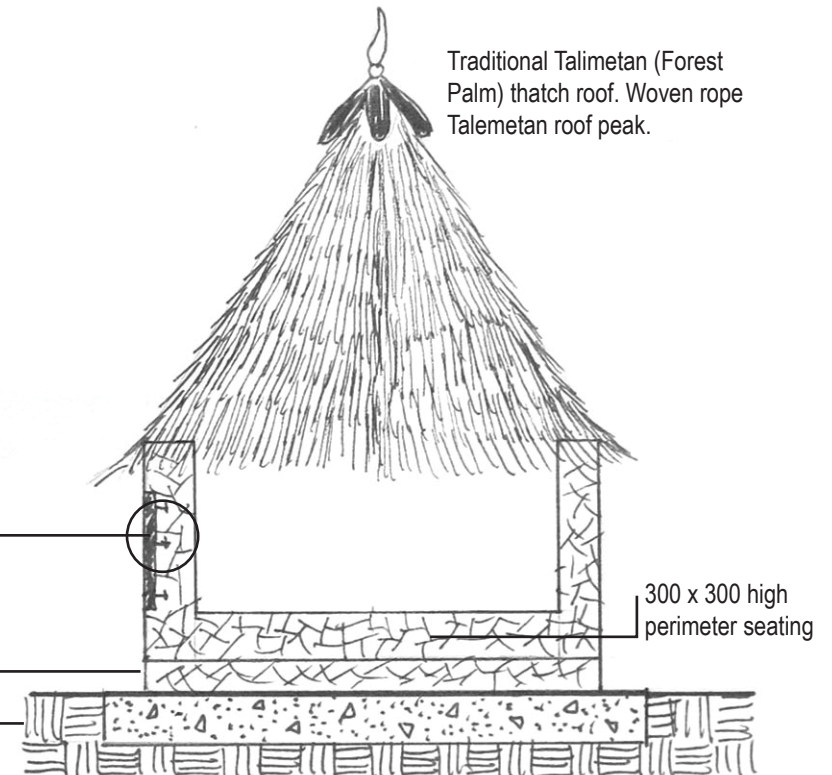


Roof peak adorned with traditional items.



Detail: Uma Traditional Front elevation

Traditional Talimetan (Forest Palm) thatch roof. Woven rope Talemotan roof peak.



Detail Uma Traditional Side elevation

